



SULLIVAN

CRAFTSMAN

1944 ft²

Overview

Packing a big punch, the Sullivan's efficient design offers a solid kitchen with enviable pantry, smart mudroom, upstairs laundry room, and private upstairs family room separated from the owner's suite.



26'



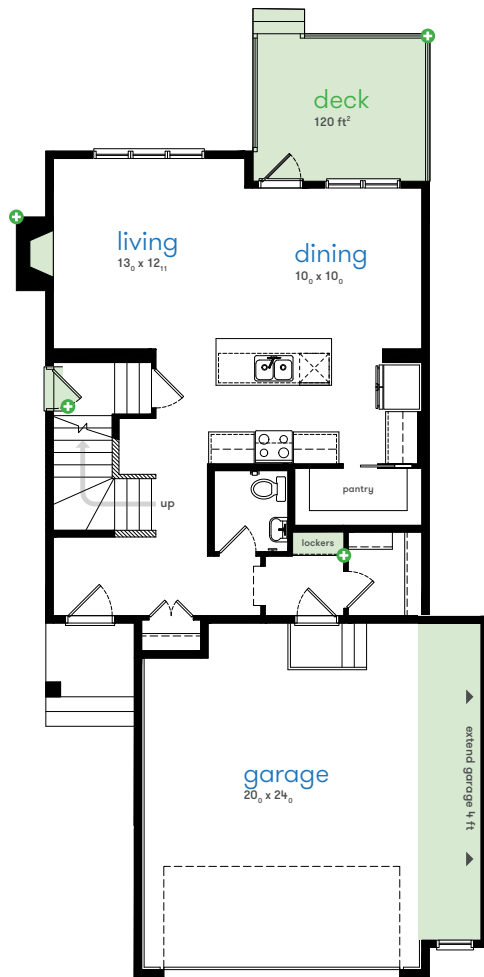
3



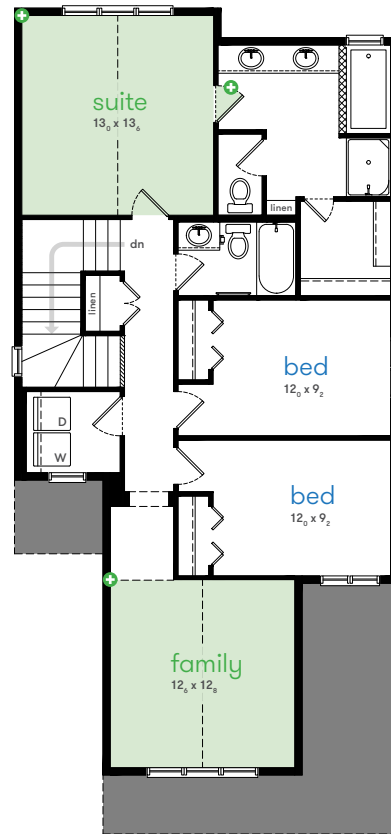
2.5



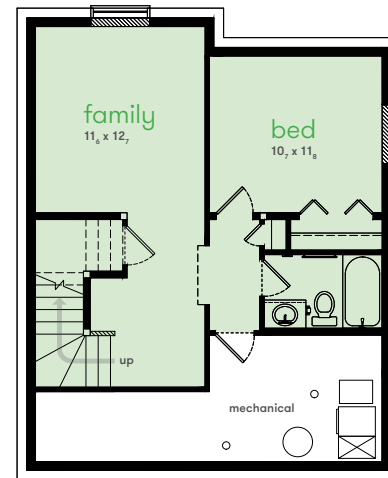
2



MAIN 820 ft²



SECOND 1124 ft²



OPT. LOWER 493 ft²

Features

- Open concept main floor
- Generously oversized walk-in pantry
- Mudroom with walk-in closet and optional lockers
- Convenient upstairs laundry room
- Private upstairs family room
- Winged bedroom design for enhanced privacy
- Owner's suite with 5-piece easy-share bath and walk-in closet
- Optional vault in the upstairs suite or family room



FRENCH COUNTRY



TUDOR



CRAFTSMAN II

For more configuration options, explore this home online at homesbydream.ca Denotes an optional feature.

All dimensions and floor plans are approximate. Floor plan shown is representative of one specific elevation and may differ in other architectural styles. Sizes and specifications are subject to change without notice. Illustrations are artists concept only. E&OE. **M058 APRIL 28, 2022**